

 YAMAHA

# Horns





## The Curtain Rises on a Dazzling New Sound

The ideal horn, as envisioned by Yamaha, is one that offers true satisfaction to music lovers everywhere, enveloping them in a world of brilliant, expressive sound.

Our relentless pursuit of perfection, backed by extensive technical expertise, has made it possible to achieve the supposedly unachievable: consistently superior horn quality. Superb, stable tone from pp to ff allows players to concentrate on the performance rather than operation. These are horns that offer an extraordinary playing experience from the first breath. They are a player's dream, with unrivalled intonation and meticulous design.

The curtain is about to rise for horn players and music lovers everywhere.







## Yamaha Full Double Horn History

Bell Size	1965	1970	1975	1980	1985
MS (Medium Small)					
M (Medium)		YHR-661	YHR-662/663	YHR-561/664/764 YHR-665/765/762/763	YHR-861
ML (Medium Large)				YHR-863	
LL (Extra Large)				YHR-666/766	YHR-862

The First Yamaha Full Double Horn  
YHR-661



The First Custom Horns  
YHR-861,862,863



Long seller Professional Model  
YHR-667

Long seller Professional Model  
YHR-668



1990 1995 2000 2005 2010 2015

YHR-869

YHR-567

YHR-167

YHR-871

YHR-667

YHR-671

YHR-867

YHR-667V

Innovative Full Double  
YHR-667V

The Second Generation  
YHR-668



YHR-668V

YHR-668

YHR-668 (MarkII)

YHR-868

For years Yamaha dreamt of creating a custom horn that delivers singularly brilliant tone.

That dream has been realized at last.

The bell is designed to produce dazzling tone that remains clear even during fortissimo passages.

A newly developed leadpipe contributes to medium high resistance and well-balanced pitch, while valves and other components have been redesigned for overwhelming expressive capability that is in keeping with the horn's flagship status.

At fortissimo or pianissimo, and every dynamic level in between, this is an instrument that will enchant listeners with its lustrous clarity.



F/B<sup>b</sup> Full Double Horn  
**YHR-869D**

- Bell = Yellow brass
- Bell size : MS, With detachable bell
- Bore = 12.1mm
- Clear laquer finish
- Valves = 4 rotors
- Mouthpiece = HR-34C
- Case = HRC - 869D



New HRC-869D is the first Yamaha semi-hard backpack style horn case. Its light weight shell is made from compressed "Kenaf" (plant name ) fiber.

The divider plate between bell space and body space has magnet stopper to prevent the bell from falling down.

A bag for straight mute & stop mute is also included.



F/B<sup>b</sup> Full Double Horn  
**YHR-869GD**

Bell = Gold brass  
Bell size:MS, With detachable bell  
Bore = 12.1mm  
Clear laquer finish  
Valves = 4 rotors  
Mouthpiece = HR-34C  
Case = HRC - 869D



**Leadpipe**

A new leadpipe design has rather strong resistance and well balanced intonation, also contributes to easy legato play and quicker response.



**Long Pull Ring**

The B<sup>b</sup> 2nd valve slide features a long pull ring for easier sliding in and out.



**MS Size Bell**

MS bell brings brilliant tone with harmonic-rich resonance and good projection. The bell stem made from one piece brass sheet, with consistent thickness and strength, enables to produce fine distinctive tone even in the fortissimo section playing. Fast response to breath input is also an appealing feature.



**Mechanical Lever Action**

The mechanical lever action comes with rod end bearing system, which is popular in Germany, for more mechanical reliability and durability.



**Adjustable Pinky Hook**

A new pinky hook can be adjusted for the most comfortable playing position.



**Additional B<sup>b</sup> Section Tuning Slide**

An additional tuning slide in B<sup>b</sup> section is featured for independent intonation fine adjustment in B<sup>b</sup> section.



**Slide Inner & Outer Tube**

The inner & outer tubes of all slides, including the main tuning slide and 1st - 3rd valve slides, are made of harder type nickel silver material to prevent tone decay and contribute to quicker response.



**Mouthpiece HR-34C**

The rim of new mouthpiece HR-34C is designed relatively thinner. It enhances the flexibility of the performance, and make it easier to play higher range notes. The inner design from cup to throat part is finetuned to bring richer tone and superb projection.

Custom

Full Double Horn



The YHR-871 has been a long time in the making, reaching its current high level of refinement after much trial and error and dedicated development. Parts and materials have been meticulously upgraded to the highest quality while retaining the authentic Geyer wrap configuration, resulting in an instrument that Yamaha can offer with pride. The YHR-871 produces a bright tone with complex harmonics that add up to a rich overall sound, and those characteristics are retained from the lowest to highest registers with a consistent playing feel. An adjustable 4th rotor thumb lever, adjustable pinky hook, long B<sup>b</sup> 2nd slide pull ring, and other carefully considered details contribute to stress-free playing convenience and comfort.



**Adjustable Pinky Hook**

A new pinky hook can be adjusted for the most comfortable playing position.



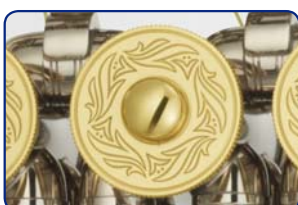
**Slide Inner Tube**

The inner tubes of all slides, including the main tuning slide, F tuning slide and 1st ~ 3rd valve slides, are made of gold brass to emphasize the horn's tonal clarity and depth.



**Rotor**

A hollow 4th rotor makes notable contributions to response and clearer tone.



**Valve Caps**

Engraved brass valve caps enhance appearance, adding visual sophistication that is on a par with high-end models while also contributing to clearer sound quality.



F/B<sup>b</sup> Full Double Horn  
**YHR-871D**

- Bell = Yellow brass
- Bell size : M, With detachable bell
- Bore = 12.1mm
- Clear laquer finish
- Adjustable thumb lever
- Mouthpiece = 32C4
- Case = HRC - 85VD



F/B<sup>b</sup> Full Double Horn  
**YHR-871**

- Bell = Yellow brass
- Bell size : M, With one-piece bell
- Case = HRC - 67V



\*Unlacquer finish is available.





Inheriting the basic design of the YHR-871D, this model offers clear, well-defined tone with smooth playability from the lowest to highest register. Playability and tone are both up to standards that will satisfy the most demanding professional player. Thoughtful details such as an adjustable 4th rotor thumb lever and long B<sup>b</sup> 2nd slide pull ring add to the instrument's appeal. The valve casings and lever mechanism have been reassessed in every detail and updated to achieve the highest possible performance and reliability. Once again, Yamaha technology and passion deliver the finest tone for players everywhere.



F/B<sup>b</sup> Full Double Horn  
**YHR-671D**

Bell = Yellow brass, Bell size : M, With detachable bell  
Bore = 12.0mm, Clear laquer finish  
Adjustable thumb lever  
Mouthpiece = 32C4  
Case = HRC-70



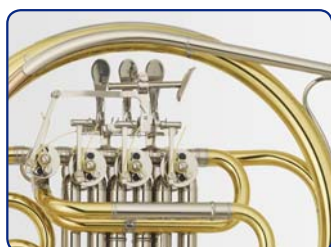
F/B<sup>b</sup> Full Double Horn  
**YHR-671**

Bell = Yellow brass, Bell size : M, With one-piece bell  
Case = HRC-667

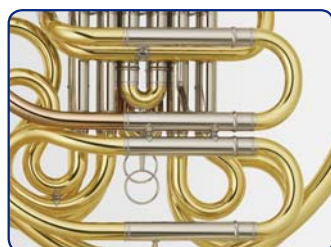


**Valve Caps**  
Nickel plated brass valve caps enhance durability.

Common YHR-871/671 Features



**Leadpipe**  
A new leadpipe design in gold brass contributes to consistent tone and playing feel throughout the instrument's range.



**Main Tuning Slide & F Tuning Slide**  
Both have rounded shapes that provide smooth playing feel to the instrument.



**Bell**  
A relatively thick rim wire results in rich, deep tone with a solid core.



**Long Pull Ring**  
The B<sup>b</sup> 2nd valve slide features a long pull ring that adds to the instrument's playing convenience.

This large-bell horn features a carefully designed leadpipe taper that contributes to enhanced mid and low register tone while offering overall sound and playability that satisfy the needs of players in a variety of styles and environments. Consummate craftsmanship has been applied in creating a bore and tubing configuration that achieve ideal breath resistance. The outer edge of the bell has been made a little thinner than usual, resulting in improved response to subtle dynamic nuances. Pianissimo passages that would normally be difficult are easier to play, and deep, satisfying tone is retained right up to the most commanding fortissimo.

It is available in yellow brass or nickel-silver.

F/B<sup>b</sup> Full Double Horn  
**YHR-668D**

Bell = Yellow brass, Bell size : LL, With detachable bell  
Bore = 12.0mm (Main tuning slide/F tuning slide=11.9mm)  
Clear laquer finish  
Adjustable thumb lever  
Mouthpiece = 30D4  
Case = HRC-70



F/B<sup>b</sup> Full Double Horn  
**YHR-668ND**

Bell = Nickel silver, Bell size : LL, With detachable bell  
Bore = 12.0mm (Main tuning slide/F tuning slide=11.9mm)  
Clear laquer finish  
Adjustable thumb lever  
Mouthpiece = 30D4  
Case = HRC-70





The triple horns offer a combination of the rich beautiful sound of a full double French horn, coupled with the sure attacks and control of a descant horn; the problems of intonation and response usually associated with triple horns have been completely eliminated.

Yamaha's long rotor and dual plane valves, along with an ingenious tubing configuration, create a unique new shape and size for these horns.

And the comfortable balance of their well thought-out designs make these traditionally unwieldy instruments easy to hold and play.

F/B<sup>b</sup>/High F Triple Horn  
**YHR-892**

Bell = Yellow brass, Bell size : MS  
Bore = 12.0mm (F side =12.3mm)  
Unlacquer finish  
A/+ stop valve  
Mouthpiece = 30C4  
Case = HRC-HF



F/B<sup>b</sup>/High F Triple Horn  
**YHR-891**

Bell = Yellow brass, Bell size : MS  
Bore = 12.0mm (F side =12.3mm)  
Unlacquer finish  
Mouthpiece = 30C4  
Case = HRC-HF



The Custom 881/882 provide the note security and tonal clarity of a descant horn, yet are capable of producing the big warm sound of an orchestral instrument.

They feature accurate pitch, even response, and enough tonal flexibility to play anything from delicate Baroque solos to full-bore Romantic compositions.

The unparalleled comfort and sound quality of these handmade horns is made possible by their innovative "long rotor" valve and unique tubing configuration.

B<sup>b</sup>/High F  
Double Descant Horn  
**YHR-882**

Bell = Yellow brass, Bell size : MS  
Bore = 12.0mm  
Unlacquer finish  
A/+ stop valve  
Mouthpiece = 30C4  
Case = HRC-HF



B<sup>b</sup>/High F  
Double Descant Horn  
**YHR-881**

Bell = Yellow brass, Bell size : MS  
Bore = 12.0mm  
Unlacquer finish  
A/+ stop valve  
Mouthpiece = 30C4  
Case = HRC-HF



(Photo : YHR-882GD)



The 567 is a full double horn with a basic design.

Its easy response and sure note centering make it ideal for students – while its colorful tone and precise intonation make it attractive to professionals. This instrument was created with the player in mind, down to the smallest components, such as an adjustable 4th valve thumb lever and water key.

F/B<sup>+</sup> Full Double Horn  
YHR-567

- Bell = Yellow brass, Bell size : M
- Bore = 12.0mm
- Clear laquer finish
- Adjustable thumb lever
- Mouthpiece = 32C4
- Case = HRC-57



F/B<sup>+</sup> Full Double Horn  
YHR-567D

- Bell = Yellow brass
- Bell size : M, With detachable bell
- Bore = 12.0mm
- Clear laquer finish
- Adjustable thumb lever
- Mouthpiece = 32C4
- Case = HRC-57D





The 322II is a single horn in B<sup>b</sup> with a beautiful clear tone and well centered notes.

It provides security and comfort in the mid-to-upper range without sacrificing any sound in the lower register.

The comfortable weight and balance increase endurance in younger players, while accurate intonation and immediate response enhance technique. An A/+ stop valve is included to eliminate the need to transpose during stopped passages. To give the sound of an open F horn to some low range notes, an optional F natural slide is available.



Optional F natural slide available

### B<sup>b</sup> Single Horn YHR-322II

Bell = Yellow brass, Bell size : M  
Bore = 12.0mm  
Clear laquer finish  
A/+ stop valve  
Mouthpiece = 32C4  
Case = HRC-35

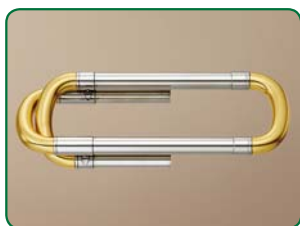


The 314II single horn features a rich, warm tone, superb flexibility, an easy response, and accurate intonation balanced through the entire range.

An E<sup>b</sup> extension tuning slide is optionally available with this instrument.

Using this slide, the player can perform music written for

E<sup>b</sup> horn without having to transpose.



Optional E<sup>b</sup> tuning slide available

### F Single Horn YHR-314II

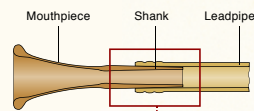
Bell = Yellow brass, Bell size : M  
Bore = 12.0mm  
Clear laquer finish  
Mouthpiece = 32C4  
Case = HRC-35



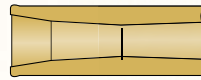
## More about Yamaha Horns

### Double shank

Horn mouthpiece shanks usually have either a 3/100 European taper or 5/100 American taper. "3/100" means that the shank diameter will change by 3 millimeters for each 100 millimeter of length. Yamaha offers a leadpipe that will accommodate both shank types, providing ample contact for a secure fit so that the player can concentrate fully on the performance.



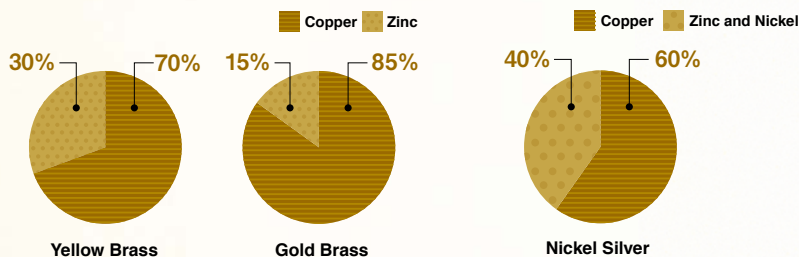
Schematic diagram of a double shank



A 5/100 taper at the leadpipe entrance changes to 3/100 toward the rear.

### Materials

The tone of a wind instrument is largely determined by the waveform produced by an oscillating column of air inside the instrument. An instrument's shape, length, and materials all affect its tone to varying degrees.



#### [Brass] Copper and Zinc Alloys

Brass is easier to work and more resistant to corrosion than iron and many other metals. Those characteristics and its natural beauty have made it a traditional choice for wind instruments. The alloy used largely defines the instrument's tone.

Brass is an alloy of copper and zinc. A range of tonal variations can be created by modifying the proportions of the alloy used for the bells of trumpets, trombones, horns, and other instruments.

**Yellow Brass:** Bright tone with excellent projection.

**Gold Brass:** Rich tone that is warm and round

#### [Nickel Silver] Copper, Zinc, and Nickel Alloys

Nickel silver is a white, lustrous blend of copper, zinc, and nickel.

It is even more resistant to corrosion than brass, and produces a brighter tone and faster response than other alloys. Nickel silver horns are generally considered to have a dark tone, but this is more a characteristic of the taper used than the material itself.

### Finishes

After the various parts of the horn are complete, they are filed and sanded to produce a smooth surface, and then buffed at high speed to bring out the full luster and beauty of the metal.

The final step is lacquering or plating that not only protects the metal from dirt and corrosion, but also enhances the instrument's tone.

#### Clear Lacquer

Protects the instrument from dirt and corrosion while contributing to a solid and somewhat dark tone with excellent projection at forte volume.

#### Unlacquered

Generally thought to produce a deep, rich resonance.





## Rotors

The construction of the rotors used in the instrument's rotary valves affect playability and operation.

**Solid:** The standard horn rotor type constructed of solid brass. Solid rotors have a correspondingly "solid" playing feel with moderate resistance.

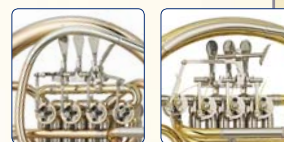
**Hollow:** Also made of brass, but hollow rather than solid and therefore lighter for agile, easy playability and operation.

## Lever Action

Horns have either a mechanical or string lever action. In a string action, the levers are linked to the rotary valves via strings (sometimes called "cords"). While a mechanical action responds crisply and precisely to lever operation, string action feels smoother, particularly at the start of lever depression and release, and the levers can be adjusted to any desired height.

**Mechanical Action:** Crisp, precise response.

**String Action:** Smooth lever feel, plus continuously adjustable lever height.



Mechanical Action

String Action

## Stop Valve

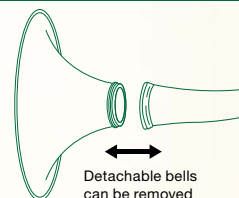
"Stopping" or "stop muting" is a horn technique in which the right hand or a special stopping mute is fully inserted into the bell to produce a more nasal, metallic tone. On an F horn this raises the pitch by a semitone, so the player compensates by using fingerings that would normally play a semitone lower. On a Bb horn, however, stopping raises the pitch by between two-thirds and three-quarters of a tone, requiring the use of a special stop valve that lowers the instrument's pitch by a corresponding amount. The stop valve allows normal fingering to be used when the horn is stopped. When not being used as a stop valve an adjustment tube can be removed so that the valve functions like the second valve slide, lowering pitch by a semitone and allowing the instrument to be played as an A horn. This can make fingering easier for pieces with sharp key signatures.



Photo:YHR-322II

## Bell Types

Horns are available with detachable or one-piece bells. Detachable bells can be removed for more compact storage and easier transportation. Detachable bells are generally considered to produce a deep tone. Yamaha detachable bell models are identified by a "D" at the end of the model number. One-piece bells cannot be removed, and generally produce a brighter tone.



Detachable bells can be removed

## Bell Size

"Bell size" refers to the size of the bell section that the player's right hand contacts while playing normally, as shown in the illustration to the right.

**Medium small (MS) YHR-869D, YHR-891 etc.**

Bright tone with good projection.

**Medium (M) YHR-871D, YHR-671D etc.**

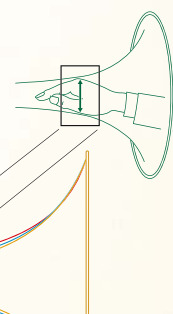
Traditionally popular in Europe. This all-around bell size produces a satisfying balance of brightness and depth that is suitable for a wide range of musical styles.

**Extra Large (LL) YHR-869D, YHR-891 etc.**

Traditionally popular in America. Rich tone that is simultaneously soft and solid. Relatively low resistance with the potential to deliver high volume.

Bell size is specified as the size of this area when the hand is inserted.

LL size  
M size  
Ms size



## Bore Size

A horn's tubing flares from a smaller to larger diameter from entrance to exit. "Bore size" refers to the internal diameter at a point near the center of that tubing. In Yamaha horns the bore size is defined by the internal diameter of the inner tuning slide tube. Bore size determines the breath flow through the instrument as well as its tone to some degree. Smaller bore sizes require less breath and are therefore easier to play and control. Larger bore sizes require more breath and are capable of producing richer tone at higher volume.

## Yamaha Horn Specifications Table

Type	Custom				Professional				
					Full Double				
Model	YHR-869D	YHR-869GD	YHR-871	YHR-871D	YHR-671	YHR-671D	YHR-668	YHR-668D	
Key					F/B <sup>b</sup>				
Material	Yellow brass	Gold brass			Yellow brass				
Finish	Clear lacquer		Clear lacquer *1		Clear lacquer				
Bell type	Detachable		One-Piece	Detachable	One-Piece	Detachable	One-Piece	Detachable	
Bore	12.1mm				12.0 mm		12.0mm (Main tuning slide/F tuning)		
Bell size	MS		M			LL			
Valves	4	4	4	4	4	4	4	4	
rotors	Solid		Solid(4th rotor:hollow)						
Lever action	Mechanical				String				
A/+ stop valve									
Adjustable Pinky Hook	•	•	•	•					
Water key	•	•	•	•	•	•	•	•	
Adjustable thumb lever			•	•	•	•	•	•	
Double shank	•	•	•	•	•	•	•	•	
Included Accessories									
Mouthpiece	34C	34C	32C4	32C4	32C4	32C4	30D4	30D4	
Case	HRC-869D	HRC-869D	HRC-67V	HRC-85VD	HRC-667	HRC-70	HRC-668	HRC-70	
Optional Accessories									

\*1 Unlacquer available \*2 Gold brass available with mechanical action \*3 Silver plate available \*4 Mechanical available with



	Intermediate		Student		Custom (Build-to-order manufacturing model)			
			Single		Triple		Descant	
YHR-668N	YHR-567	YHR-567D	YHR-322II	YHR-314II	YHR-891	YHR-892	YHR-881	YHR-882
			B <sup>b</sup>	F	F/B <sup>b</sup> /HighF		B <sup>b</sup> /HighF	
Nickel silver	Yellow brass *2		Yellow brass		Yellow brass *5			
	Clear lacquer *3	Clear lacquer		Clear lacquer *3	Unlacquer *6			
One-Piece *7	One-Piece	Detachable	One-Piece		One-Piece *7			
slide=11.9mm)	12.0mm				12.0mm (F side=12.3mm)		12.0 mm	
	M				MS *8			
4	4	4	4	3	5	6	5	6
Solid					Hollow		Solid	
	String *4		String		Mechanical (1st ~ 3rd lever) *9 (A/+stop) String (B <sup>b</sup> /F,B <sup>b</sup> /High F lever)			
			•			•	•	•
•	•	•					•	•
•	•	•			•	•★	•	•★
•	•	•	•	•	•	•	•	•
					Handrest/Low pitch mouthpiece receiver			
30D4	32C4	32C4	32C4	32C4	30C4	30C4	30C4	30C4
HRC-668	HRC-57	HRC-57D	HRC-35	HRC-35	HRC-HF	HRC-HF	HRC-HF	HRC-HF
			F Natural slide	E <sup>b</sup> Tuning slide				

gold brass material \*5 Gold brass, Nickel silver available \*6 Clear lacquer available \*7 Detachable available \*8 ML available \*9 String available ★ A/+ stop lever fixed

## Artist Profiles & Comments



### Thomas Bacon (International Horn Soloist)

I can scream and cry, I can whisper and soothe, I can rant and rave and be as crazy or calm as I want. And I can do it all by blowing into my Yamaha horn. My Yamaha horn makes everything easier.

Photo Credit Ross Reitzammer



### Jens Plücker

(Principal Horn of the NDR Sinfonieorchester Hamburg)

The new Yamaha YHR-869G Horn offers a fantastic sound, excellent intonation and easy response. An instrument that can be played easily at any position in an orchestra.



### Richard Bissill (Principal Horn of the Orchestra of the Royal Opera House, Guildhall school of music)

I have played Yamaha horns exclusively for over 30 years. They are well-built, responsive and resilient and have served me well throughout my career. During this time I have never felt the need to change. Why would I need another brand?



### James Sommerville

(Principal Horn of the Boston Symphony Orchestra)

I have been using Yamaha horns for my entire professional career. I need an instrument that is equally at home in concerto playing, chamber music, and big orchestral playing; Yamaha horns can do all of that for me. They have flexibility, reliability, and a pure and beautiful sound in any setting.

## Mouthpiece



Standard Series

Model No.	Rim			Cup Depth	Throat	Backbore
	Inner Diameter	Contour	Thickness			
28B	16.87mm	standard	semi-thick	semi-shallow (V-cup)	3.90mm	semi-wide
29B	17.07mm	standard	semi-thick	semi-shallow (V-cup)	3.90mm	semi-wide
29C4	17.08mm	semi-flat	thick	standard (U-cup)	3.98mm	standard
29D4	16.88mm	semi-flat	standard	semi-deep (double-cup)	4.50mm	semi-narrow
30B	17.27mm	standard	standard	semi-shallow (V-cup)	3.90mm	semi-wide
30C4	17.28mm	semi-flat	standard	standard (U-cup)	3.98mm	standard
30D4	17.08mm	semi-flat	standard	semi-deep (double-cup)	4.50mm	semi-narrow
31B	17.47mm	standard	standard	semi-shallow (V-cup)	3.90mm	semi-wide
31D4	17.28mm	semi-flat	standard	semi-deep (double-cup)	4.50mm	semi-narrow
32B	17.67mm	standard	semi-thick	semi-shallow (V-cup)	3.90mm	semi-wide
32C4	17.48mm	semi-flat	standard	standard (U-cup)	3.98mm	standard
32D4	17.48mm	semi-flat	standard	semi-deep (double-cup)	4.50mm	semi-narrow
33B	17.87mm	standard	semi-thick	semi-shallow (V-cup)	3.90mm	semi-wide
33C4	17.68mm	semi-flat	standard	standard (U-cup)	3.98mm	standard
34B	18.07mm	standard	semi-thick	semi-shallow (V-cup)	3.90mm	semi-wide
34C	17.81mm	semi-round	semi-thin	standard (U-cup)	4.09mm	semi-narrow
34C4	17.88mm	semi-flat	standard	standard (U-cup)	3.98mm	standard
35C4	18.08mm	semi-flat	standard	standard (U-cup)	3.98mm	standard



Custom GP Series

Model No.	Rim			Cup Depth	Throat	Backbore
	Inner Diameter	Contour	Thickness			
30-GP	17.08mm	standard	standard	standard (double-cup)	4.40mm	semi-narrow
31-GP	17.28mm	standard	standard	standard (double-cup)	4.40mm	semi-narrow
32-GP	17.48mm	standard	standard	standard (double-cup)	4.40mm	semi-narrow



Signature Series

Thomas Bacon — International Horn Soloist

Model No.	Rim			Cup Depth	Throat	Backbore
	Inner Diameter	Contour	Thickness			
BACON	17.99mm	standard	medium	semi-shallow (V-cup)	4.50mm	semi-wide



James Sommerville — Principal Horn of the Boston Symphony Orchestra

Model No.	Rim			Cup Depth	Throat	Backbore
	Inner Diameter	Contour	Thickness			
SOMMERVILLE	16.93mm	semi-flat	medium	standard (V-cup)	4.30mm	standard



## Vienna Philharmonic Orchestra



### Sebastian Mayr

Yamaha Wienerhorn is my first option(selection??) because of their the beauty of the sound and perfect response.



### Thomas Joebstl

What I appreciate with my Yamaha Horn is, the balance through all range.



### Wolfgang Lintner

Trust is good, Yamaha is better!



### Ronald Janezic

(Principal)

The yamaha Wienerhorn impresses by their wonderful sound, perfect response and exceptionally good Intonation. Through their excellent work, Yamaha Wiener Horn is excpetionally reliable and no alternative to my mind.



### Jan Jankovic

People may have many objectives, but without the right tools, it is not possible to achieve them. The Yamaha Vienna Horn makes it possible for me to reach my goals.

## SILENT Brass™



SILENT Brass™ SB3X (for French Horn)  
(Personal Studio™ STX + Pickup Mute™ PM3X)



Pickup Mute™ PM3X (for French Horn)

